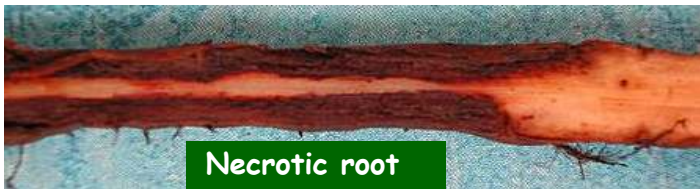


DAMAGE TO BANANA caused by NEMATODES

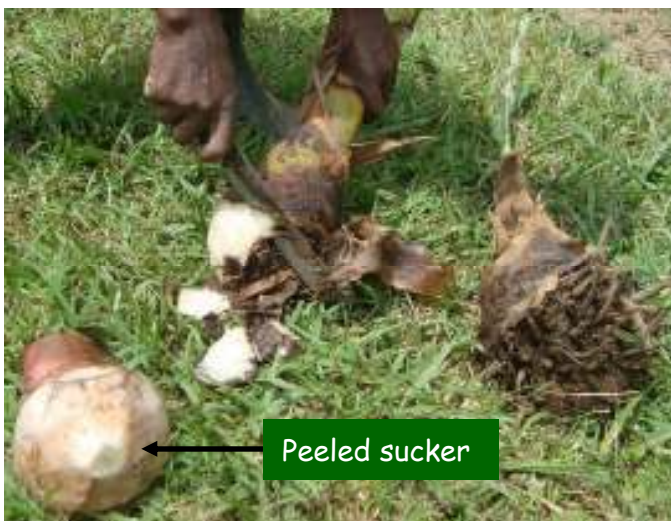


Nematodes are microscopic, which feed on banana roots. This destroys them, which reduces uptake of water and nutrients. When damage to roots is severe, it will cause toppling. New fields become infested by using infected suckers. Nearly all suckers will be infected with nematodes.



What to do ?

ALWAYS CLEAN your suckers



Remove all roots* and peel the corm

*destroy roots and peelings = dry and burn



Dip peeled suckers in boiling water for 30 seconds* (shortly before planting)

* count 1 to 30 slowly, no more (kill nematodes only, not your suckers...)



USE MULCH, THE MORE THE BETTER

When mulched regularly, plants better cope with nematodes.

Yangambi Km5, FHIA 17 and FHIA 23 are relatively tolerant varieties of nematodes. Where nematode damage is high, if possible, rotate first with non host break crops* before replanting banana, or plant bananas in a new field, using clean suckers or tissue culture plants. Place manure or organic mulch in the planting hole and then mulch regularly.

* at least for 2 years, for instance with cassava, sweet potatoe



Wild sunflowers are great for mulching