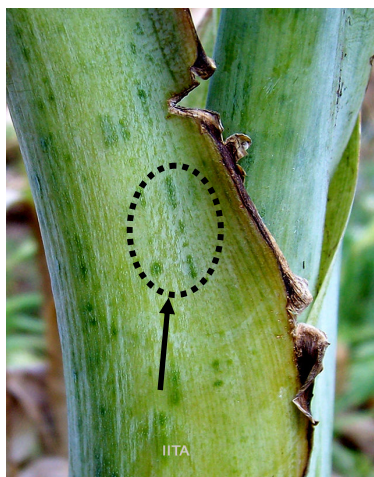


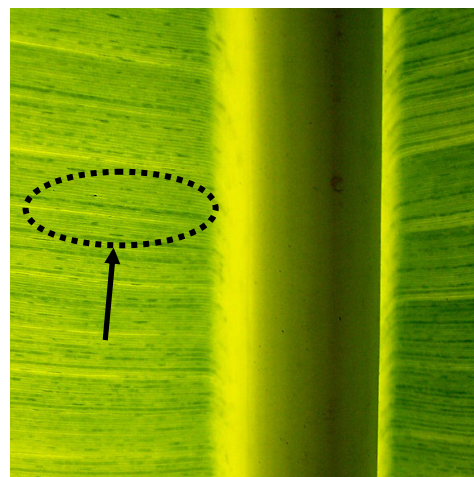
BANANA BUNCHY TOP DISEASE



On heavily infected plants, narrow upright leaves are tightly bunched



dark green dots and dashes on petiole



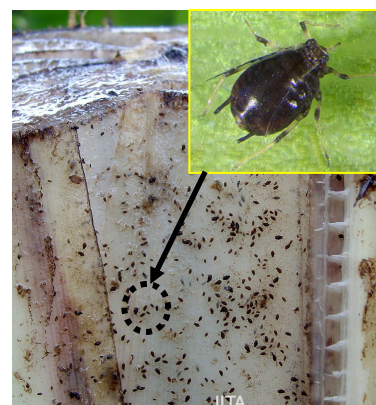
Dark green dots and dashes on leaf veins



Leaf margins appear yellow or bleached (chlorotic)

Bunchy top disease is caused by Banana bunchy top virus. Plants infected at later stages may not show the characteristic 'bunchy top' symptoms. But suckers from such plants show distinctive symptoms: yellowing of leaf margins and dark streaks on leaves and pseudostem.

The BBTV is transmitted by aphids and by planting materials derived from the diseased plants.



Aphids = virus carriers

What to do ?

DESTROY all infected plants and their suckers

Uproot and immediately bury infected plants and their suckers.
Do not move any planting material from infected farms.

CHECK all your plants

Carefully examine banana plants in your field, especially within 5 meter of infected plants.
They may be infected but may not show symptoms until later.

ONLY use HEALTHY planting material

Never use suckers from diseased plants or fields, **even if suckers appear healthy**.
Use suckers from clean fields. If available, use certified tissue culture plants.