

RESEARCH ARTICLE

Optimum time for hand pollination in yam (*Dioscorea* spp.)

Jean M. Mondo^{1,2,3}, Paterne A. Agre^{1*}, Robert Asiedu¹, Malachy O. Akoroda⁴, Asrat Asfaw¹

1 International Institute of Tropical Agriculture (IITA), Ibadan, Nigeria, **2** Institute of Life and Earth Sciences, Pan African University, University of Ibadan, Ibadan, Nigeria, **3** Department of Crop Production, Université Evangélique en Afrique (UEA), Bukavu, Democratic Republic of Congo, **4** Department of Agronomy, University of Ibadan, Ibadan, Nigeria

* p.agre@cgiar.org



Abstract

Hand pollination success rate is low in yam (*Dioscorea* spp.), due partly to suboptimal weather conditions. Thus, determining the most suitable time for pollination could improve the pollination success in yam breeding programs. We performed continuous hand pollination within flowering windows of *D. rotundata* and *D. alata* for two consecutive years to determine the most appropriate month, week, and hours of the day allowing maximum pollination success. In *D. alata* crossing block, we observed significant differences among crossing hours for pollination success ($p = 0.003$); morning hours (8–12 a.m.) being more conducive than afternoons (12–5 p.m.). No significant differences existed between crossing hours in *D. rotundata*, though the mid-day seemed optimal. For both species, the time interval 11–12 a.m. was more appropriate for crossing while 4–5 p.m. was the poorest. However, *in vitro* pollen germination tests showed that mid-day pollen collection (12 noon–2 p.m.) had better results than both extremes, though there were strong genotypic effects on outcomes. Pollination success rates differed significantly among months for *D. alata* ($p < 0.001$) but not for *D. rotundata* ($p > 0.05$). Differences in pollination success existed across weeks within flowering windows of both *D. alata* ($p < 0.001$) and *D. rotundata* ($p = 0.004$). The seed production efficiency (SPE) had a similar trend as the pollination success rate. No clear pattern existed between the pollination time and the seed setting rate (SSR) or seed viability (SV), though their dynamics varied with weeks and months. This study provided an insight on the dynamics of pollination outcomes under the influence of pollination times and allows detecting months, weeks, and hours of the day when hybridization activities should be focused for better results.

OPEN ACCESS

Citation: Mondo JM, Agre PA, Asiedu R, Akoroda MO, Asfaw A (2022) Optimum time for hand pollination in yam (*Dioscorea* spp.). PLoS ONE 17(8): e0269670. <https://doi.org/10.1371/journal.pone.0269670>

Editor: Kleber Del-Claro, Universidade Federal de Uberlandia - Campus Umuarama, BRAZIL

Received: May 23, 2022

Accepted: August 5, 2022

Published: August 18, 2022

Copyright: © 2022 Mondo et al. This is an open access article distributed under the terms of the [Creative Commons Attribution License](https://creativecommons.org/licenses/by/4.0/), which permits unrestricted use, distribution, and reproduction in any medium, provided the original author and source are credited.

Data Availability Statement: All relevant data are within the article and its [Supporting information files](#).

Funding: The research activities were funded by the BMGF through the AfricaYam project (OPP1052998). The funders had no role in study design, data collection and analysis, decision to publish, or preparation of the manuscript.

Competing interests: The authors have declared that no competing interests exist.

Introduction

Yam (*Dioscorea* spp.) is a multispecies staple crop with significant contributions to food security and poverty alleviation in tropics and subtropics, especially in West Africa where it is extensively produced [1]. Its cultivation faces several yield restricting and quality reducing factors related to poor crop husbandry, biotic and abiotic stresses, and postharvest losses that widen the gap between the farmer yields ($\sim 10 \text{ t ha}^{-1}$) and the crop potential ($40\text{--}50 \text{ t ha}^{-1}$) and reduce the market penetration [2]. Plant breeding research is an integral component of

addressing these challenges by development and delivery of resilient, productive, and high-quality varieties. However, improved cultivar development through breeding in yam is challenged by sexual reproduction abnormalities resulting from sparse, irregular, and asynchronous flowering, cross compatibility barriers as the vegetative propagation is favored at the expense of botanical seeds during the domestication and subsequent cultivation process [3]. Yam plant exhibits extremely low levels of fruit-to-flower and seed-to-ovule ratios, partly because of the sensitivity of its reproductive phases to suboptimal weather conditions [4]. Important climatic factors such as temperature, rainfall, relative humidity, and light intensity fluctuate from one location to the other and even from time to time in the same location. These fluctuations dictate the limit within which controlled pollination can be successfully conducted in any given location for a given species [4–8].

Several attempts were undertaken to improve hand pollination success rate in yam breeding programs by determining the appropriate time for crossing [3, 9–12]. However, the optimum time for yam pollination is location-specific and depends on local environmental conditions [3]. High relative humidity, well-distributed rainfall, sunshine, and moderate atmospheric temperatures are the leading climatic factors for successful pollination in *D. alata* and *D. rotundata* yams [4, 11]. Recommended time for *Dioscorea* species hand pollination in Nigeria (12 noon–3 p.m.) was set ~40 years ago [10], thus, there is a chance that trends recorded four decades ago may have changed. Besides, due to predominant sunny conditions at the previously recommended crossing hours, crossing activities are seldom undertaken at mid-day [3]. Pollinating technicians most conveniently operate in morning hours (8 a.m.–12 noon) [3]. Yet, no study assessed the pollination success rates at those hours compared to the mid-day hours recommended by the literature.

Most yam species, including *D. alata* and *D. rotundata*, are dioecious with male and female flowers on separate individuals [3, 4, 13–15]. The gene flow between and among these species to meet breeding objectives depends, therefore, on cross-pollination success. The cross-pollination involves three phases: the release of pollen from the anther, transfer of pollen from the anther to the stigma, and successful placement of pollen on receptive stigma surface, followed by germination [16–18]. The transfer of yam pollen from the anther to the stigma is either by the assistance of local insects (natural) or human hand (artificial) since the sticky nature of yam pollen renders the wind pollination impossible [3]. However, the insects' inefficiency is a major factor of low natural pollination success in yam [19, 20]. This insects' inefficiency is associated with low visitation rate, limited movements, and selectivity [3, 21–23]. Some species of yam such as *D. composita* and *D. floribunda* are seldom visited by insects since they produce less and unattractive floral scents [21, 24, 25]. Such less attractive species have low natural fruit sets (<5%) [3, 21]. Hand pollination is used as an alternative solution; it is 2–3 times more efficient than natural pollination by insects [10, 20]. Whether natural or artificial, the pollination success is associated with other factors such as pollen viability, stigma receptivity, cross compatibility, and the prevailing weather conditions [3, 4, 26].

This study aims at improving pollination success in yam breeding programs by assessing the optimum time of pollination, when the pollen is fully viable, the stigma receptive, and the weather is conducive in *D. alata* and *D. rotundata* crossing blocks. It uses crossing block, *in vitro* pollen germination, and weather data for assessment.

Materials and methods

Study site, plant material, and field establishment

Two-year experiment was conducted at the International Institute of Tropical Agriculture (IITA), Ibadan (7° 29' N and 3° 54' E), Nigeria, from April 2020 to February 2022. Six female

parents (three *D. rotundata* and three *D. alata* breeding lines/clones) were selected based on the length of their flowering window and flowering intensity. On the other hand, six male parents (three per species) were used as pollen sources. All these materials were breeding lines maintained by the IITA Yam Breeding Unit (S1 Table). The cross-compatibility among selected genotypes, flowering window, flowering intensity, and their ploidy statuses were based on 2010–2020 historical data information [4].

The planting was done in April for both species and years. Male and female crossing blocks were grown at appropriate spacing (1 m × 1 m). Each of the 12 genotypes (six males and six females) were represented by 15 plants, making a total of 180 plants for the entire crossing block. Recommended field management was conducted, including individual plant staking, fertilizer application, supplemental irrigation, regular weeding, etc. Pollination on *D. rotundata* crossing blocks were carried out from August to mid-October while it started in late September and ended in early December for *D. alata*. It is noteworthy that the flowering initiations of these two species are separated in time by two-month interval, i.e, the flowering initiation of *D. rotundata* is late July to early August while *D. alata* initiation is late September to early October though they are both planted in April [3]. Pictures at Fig 1 show the two yam



Fig 1. Field pictures of studied yam species. (A) *D. rotundata* female plant being pollinated using a pin a binocular magnifying glass, (B) *D. rotundata* male plants at flowering stage, (C) *D. rotundata* green fruits, (D) *D. alata* female plant at flowering with some flowers bagged, (E) *D. alata* male plants at flowering stage, (F) *D. alata* green fruits. *D. alata* is characterized by angular stem, high biomass (vigor), and late maturity (~10 months) while *D. rotundata* has round/circular and thorny stem with hairy tubers and matures in ~8 months.

<https://doi.org/10.1371/journal.pone.0269670.g001>

species used in this study. Weather data in the field was recorded using a data logger for the entire research period. The following weather conditions were recorded: rainfall (mm), evaporation (mm), wind speed (km h^{-1}), solar radiation ($\text{MJ m}^{-2} \text{day}^{-1}$), minimum and maximum temperatures ($^{\circ}\text{C}$), minimum and maximum relative humidity (%), and sunshine (h).

Pollen viability assessment

In vitro pollen germination testing was performed regularly to ensure pollination results were not influenced by the pollen viability status. The previously optimized pollen germination testing protocol by Mondo et al. [14] was used. This consisted of culturing anthers with pollen on Petri dishes containing a nutritive medium made of 10% sucrose, 100 ppm H_3BO_3 , 300 ppm $\text{Ca}(\text{NO}_3)_2 \cdot 4\text{H}_2\text{O}$, 200 ppm $\text{MgSO}_4 \cdot 7\text{H}_2\text{O}$, and 100 ppm KNO_3 . This medium was supplemented with 0.5% agar and adjusted at pH 6.5. The culture was incubated at dark for 3 h under 25°C . The pollen germination output was visualized under a fluorescence microscope (Olympus BX51, Tokyo, Japan) at $10\times$ magnification. The stigma receptivity was determined using visual observation of the female flowers prior the crossing. Practically, the flower bagging is decided when the flower cap starts splitting and yellowing (changing the initial green color to yellow). On the other hand, the flower is ready for pollination when it is fully open and the stigma easily identifiable. Once the female flower matures (opens), the stigma is receptive for 9–11 days, though it is recommended to avoid the first day after anthesis for better results [3, 11].

Hand pollinations

At flowering, female flower buds (unopen flowers) were bagged with thrip-proof cloth-bags five days before pollination to avoid unwanted pollination by thrips [3]. On the other hand, recently open male flowers were selected as pollen source, since yam pollen viability is short (4–5 h) [3]. Hand pollinations between selected male and female plants were carried out from 8:00 a.m. to 5:00 p.m. for the entire flowering window, using a pin and a binocular magnifying glass to remove the anther from the male parent's flower and deposit it on the stigma of the female parent's flower since the yam pollen is tiny and sticky to the anther [3]. A cumulative number of 9,775 *D. rotundata* and 6,565 *D. alata* female flowers were hand-pollinated with fresh pollen across crossing hours for the two years. It is noteworthy that *D. rotundata* flowering window is much longer than that of *D. alata* and, thus, provided the possibility of making more crosses than we did on the *D. alata* crossing block. At each pollination day, an equal number of female flowers were pollinated hourly. The pollinated flowers were then kept bagged for two weeks to ensure the purity of offspring from crosses.

Following data were collected to assess the optimal time for hand pollination: (1) date of pollination, (2) time of pollination, (3) fruit set (evaluated two weeks after pollination [3]), and (4) the seed set at plant physiological maturity. After fruit processing, the seed viability was also assessed.

Data collected on the fruit and seed sets were further used to calculate the pollination success rate, the seed setting rate (SSR), the seed production efficiency (SPE), and the seed viability (SV) as in Mondo et al. [4, 27] and Asfaw et al. [15]. The pollination success rate was calculated as follows:

$$\text{Pollination success (\%)} = \frac{\text{Number of fruits set}}{\text{Number of flowers pollinated}} \times 100 \quad (1)$$

The seed setting rate (SSR) was the ratio between the number of seeds from a cross and the number of fruits multiplied by six (which is the expected number of seeds in a yam fruit):

$$\text{Seed setting rate (\%)} = \left(\frac{\text{Number of seeds set}}{\text{Number of fruits set} \times 6} \right) \times 100 \quad (2)$$

The seed production efficiency (SPE) for a cross was calculated as the number of viable seeds divided by six times the number of pollinated flowers multiplied by 100:

$$\text{SPE (\%)} = \frac{\text{Number of viable seeds}}{\text{Number of flowers pollinated} \times 6} \times 100 \quad (3)$$

The seed germination rate (SV) was estimated by dividing the seedling stand count in nurseries by the number of seeds sown multiplied by 100:

$$\text{Seed viability (\%)} = \frac{\text{Number of seeds germinated}}{\text{Number of seeds sown}} \times 100 \quad (4)$$

Statistical data analysis

The analysis of variance (ANOVA) was performed to detect differences among pollination successes, SPE, SSR, and SV using the pollination month, week, and hour of the day as factors. In this analysis, and for the estimation of the LSmean, genotypes were considered as fixed effect and the other variables random. When necessary, means were separated by the least significant difference (LSD) test at 0.05 p-value threshold. Analyses and plotting of graphs were performed using ggplot2 package in R [28].

Results

Weather conditions at IITA Ibadan breeding site

Among weather conditions, the solar radiation fluctuated much across flowering weeks (107.3 MJ m⁻² day⁻¹ in week 6 to 188.6 MJ m⁻² day⁻¹ in week 21). The wind speed varied with weeks (week 15 had lowest wind speed: 0.5 km h⁻¹ while week 4 had highest wind speed: 5.1 km h⁻¹). Maximum and minimum temperatures followed similar trends across weeks: week 21 had the highest minimum (27.5°C) and maximum temperatures (28.6°C). The relative humidity ranged from 72.0 to 96.1%. The rainfall amount for the months (July to December) covering the flowering window was 940.3 mm with the last week of August (week 8) recording the highest weekly rainfall (145.6 mm) (Fig 2A and 2B). Weather conditions varied with hours of the day: solar radiation, maximum and minimum temperatures were highest at the midday (11 a.m.–3 p.m.). The relative humidity had an opposite trend than temperatures, midday (1–4 p.m.) having lowest values (63.3–65.5%) than morning and night hours (Fig 2C and 2D).

Pollination success across crossing time

There were significant differences among crossing hours for pollination success in *D. alata* ($p = 0.003$), morning hours (8–11 a.m.) being better than afternoons (12–4 p.m.) (Fig 3A, S2 Table). No significant difference existed between crossing hours in the *D. rotundata* crossing block ($p = 0.618$, Fig 3B). Based on the crossing block data, 11 a.m. could be considered as optimal for both species (18.6% for *D. alata* and 40.3% for *D. rotundata*). Lowest rates were recorded at 4 p.m. for both species (3.3% for *D. alata* and 30.5% for *D. rotundata*). Though both crossing time and genotype had a significant effect on the *D. alata* pollination outcome

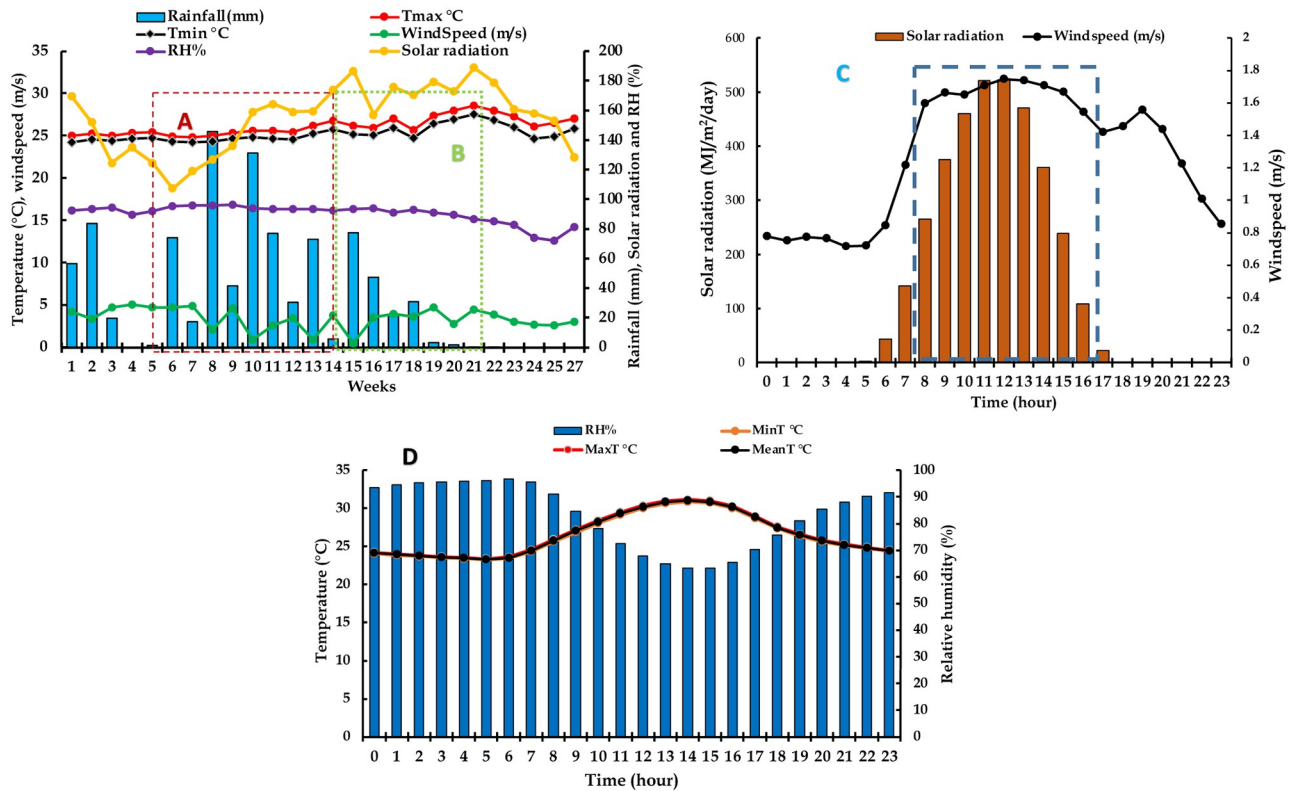


Fig 2. Variations in weather conditions for 2020 and 2021 crossing windows, IITA Ibadan station. Week 1 corresponds to 1st week of July while Week 27 corresponds to the last week of December. (A) *D. rotundata* crossing window started early August (Week 5) and ended mid-October (Week 14). (B) *D. alata* crossing window started in mid-October (Week 14) and ended early December (Week 21). (C) trends of daily variations in solar radiation and windspeed, (D) trends of daily variations in temperatures and relative humidity. On the time axis for (C) and (D), 0 refers to midnight while 23 refers to 11 p.m. of the same day. Highlighted hours (8 a.m. to 5 p.m.) correspond to crossing hours. Tmax = maximum temperature, Tmin = minimum temperature, RH = relative humidity.

<https://doi.org/10.1371/journal.pone.0269670.g002>

($p < 0.001$), their interaction was not significant (S2 Table). *In vitro* pollen germination data (based on experiment assessing the germination rates of pollen collected at different day times across the flowering window) showed, however, that mid-day pollen collection had better results than both extremes though the response was genotype-specific ($p = 0.001$; Fig 4, S1 Fig). Pollen germinated most between 12 noon and 2 p.m. (18.7–20% for *D. alata* and 22.9–25.3% for *D. rotundata*).

Year and month effects on pollination success

Pollination success rate was higher in 2021 (29.1%) than 2020 (20.5%) regardless of the species (Fig 5). There were significant differences in pollination success rates among months for *D. alata* ($p < 2.2e-16$) but not for *D. rotundata* ($p = 0.053$). During *D. alata* crossing window, October (32.9%) was consistently the optimum month for pollination across both years while November (6.9%) and December (5.6%) had poor pollination success rates. For *D. rotundata* on the other hand, September had relatively best results across years while rates were lowest in October (Fig 5). Within months, we had also observed variability among weeks of the same month for both species ($p < 2.2e-16$ for *D. alata* and $p = 0.004$ for *D. rotundata*). The weekly trends are presented at S2 Fig.

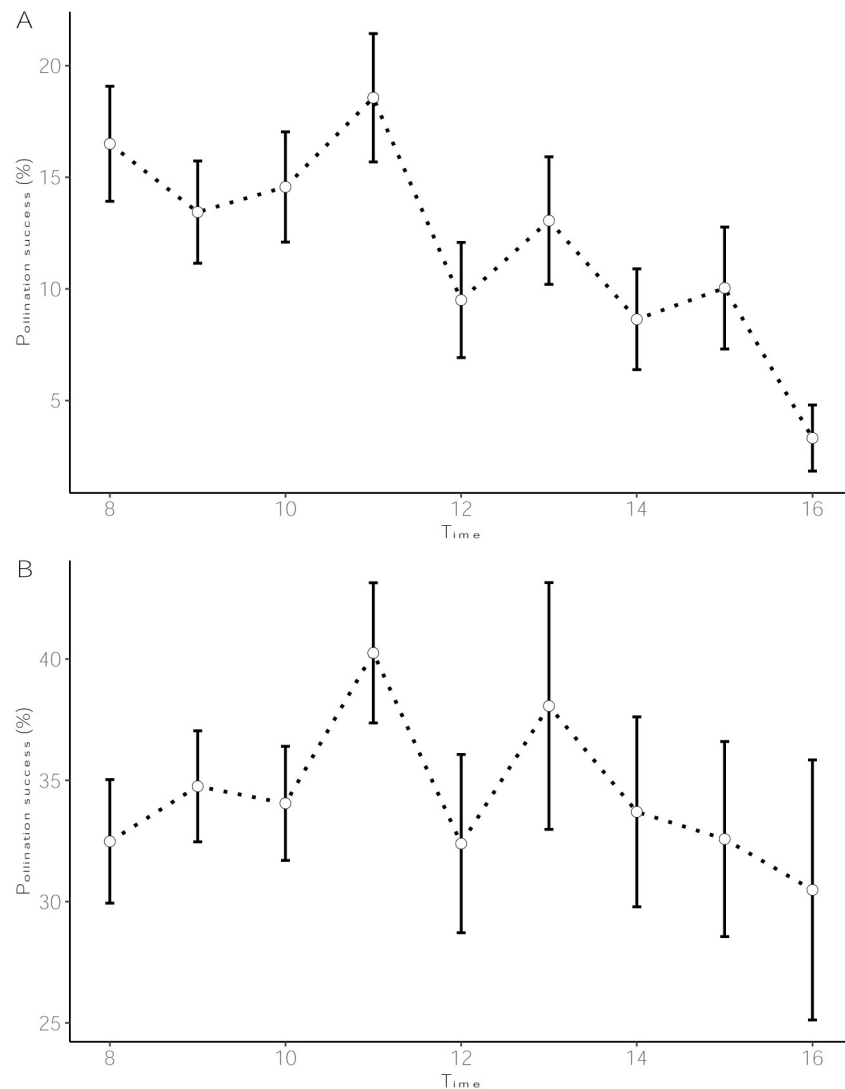


Fig 3. Pollination success across crossing hours: (A) *D. alata*, (B) *D. rotundata*.

<https://doi.org/10.1371/journal.pone.0269670.g003>

Bagging-to-crossing time interval and pollination success

There was an association between the pollination success rate and the bagging-to-crossing time interval ($R^2 = 0.97$, $p < 0.001$). Results suggested that 4–6 days is the optimal interval between flower bagging and crossing time (Fig 6). The pollination success within that interval ranged from 44.4–50.2% while the lowest success rate was recorded for crosses made within two days after bagging (14.5%).

Dynamics of SPE, SSR, and SV across crossing times

Only the SPE was influenced by the hour of pollination ($p = 9.66e-06$), no particular pattern existed for SSR and SV regardless of the species (Table 1, S3 Fig). For SPE, the trend was comparable to the one of the pollination success rate: 11–12 a.m. had highest SPE values (6.01% for *D. alata* and 22.97% for *D. rotundata*). Lowest values were recorded at 4–5 p.m. for both *D. alata* (0.11%) and *D. rotundata* (9.51%). At the monthly basis, the SPE varied with months,

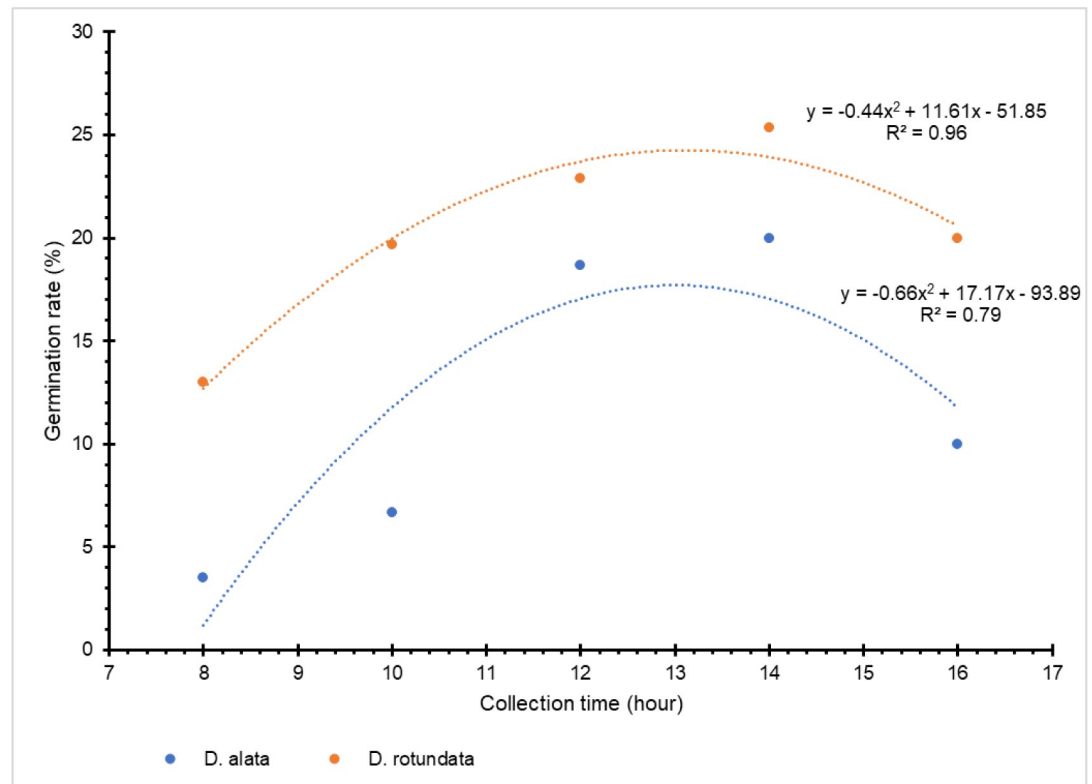


Fig 4. Dynamics of pollen germination rates across day hours.

<https://doi.org/10.1371/journal.pone.0269670.g004>

October being optimal for *D. alata* (10.3%) and September for *D. rotundata* (18.1%). October (12.2%) and December (0.2%) were worst for *D. rotundata* and *D. alata*, respectively (Fig 7A and 7B). For *D. alata*, October had once again the highest SSR (28.1%) and December the lowest (2.3%). August had highest SSR (60.5%) for *D. rotundata* and October the lowest (30.1%) (Fig 7C and 7D). Seed viability was indifferent to monthly variabilities and ranged from 70.6–75.6% for *D. alata* and 75.3–81.6% for *D. rotundata* (Fig 7E and 7F).

At weekly basis, there were significant differences among weekly SPE (S4 Fig), SSR (S5 Fig), and SV (S6 Fig). Second (10.8) and third (11.8%) weeks had highest SPE for *D. alata* while highest SPE were on fourth (21.9%) and fifth (22.8%) weeks for *D. rotundata*. Lowest SPE were in the 6th to 8th weeks (0%) for *D. alata* and second (7.2%) and 8th (9.9%) weeks for *D. rotundata*. SSR values were not significantly different for weeks 1 to 5 (17.1–29.0%) after which they decreased significantly in *D. alata* crossing blocks (0.0–8.3%). For *D. rotundata*, SSR had a similar trend as for SPE, the second week having lowest SSR (23.3%) and week 1 (65.3), week 4 (60.5%) and week 5 (63.1%) had the highest SSR. *D. alata* seed viability did not vary much across weeks (S6 Fig) while for *D. rotundata*, the second week (56.8%) had significantly lower seed viability than all other weekly means (74.8–82.3%).

Weather influence on yam reproduction traits

Regardless of the species, the pollination success (CR) was significantly and positively influenced by the maximum relative humidity ($r = 0.207^{***}$), minimum relative humidity ($r = 0.339^{***}$), solar radiation ($r = 0.064^*$), rainfall ($r = 0.129^{***}$). It was, however, significantly and negatively influenced by maximum temperature ($r = -0.346^{***}$), sunshine ($r = -0.213^{***}$),

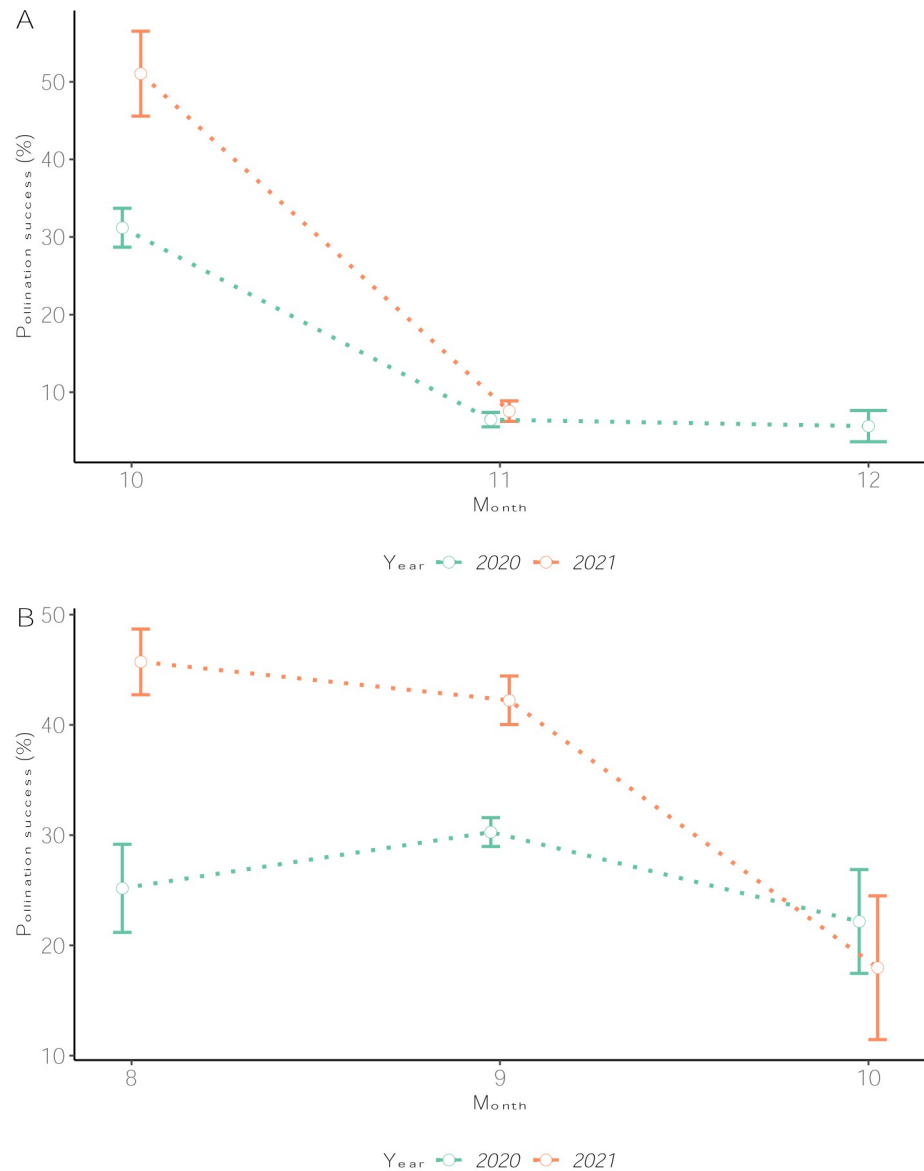


Fig 5. Pollination success rates across crossing months for 2020 and 2021. (A) *D. alata* and (B) *D. rotundata*. The number 8 refers to August and 12 to December.

<https://doi.org/10.1371/journal.pone.0269670.g005>

and evaporation (-0.231^{***}). The SSR ($r = 0.113^*$) and SPE (0.720^{***}) were significantly correlated with the pollination success and thus responded in the same way to weather conditions (Fig 8). The seed viability was indifferent to most weather conditions except the evaporation ($r = -0.113^*$) and rainfall ($r = 0.107^*$). The results on how each species responded to each of the assessed weather parameters and the regression plots of most influential weather parameters on pollination success are presented at S7 and S8 Figs, respectively.

Discussion

Pollination success depended on crossing time

Yam breeding is challenged by sexual reproduction abnormalities (sparse, irregular, and asynchronous flowering, cross compatibility barriers and low fertility) because of the domestication

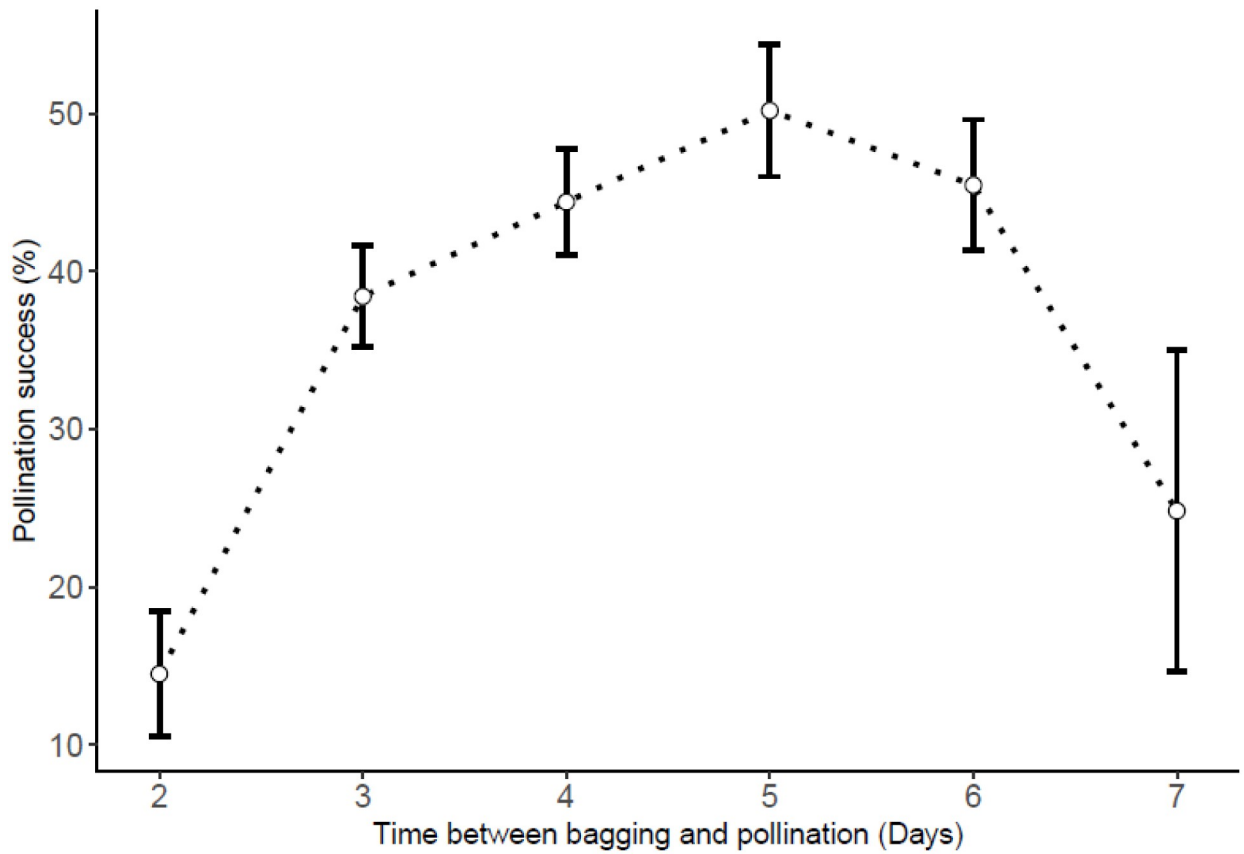


Fig 6. Influence of the time interval between flower bagging and crossing on pollination success rates.

<https://doi.org/10.1371/journal.pone.0269670.g006>

process that favored vegetative propagation at the expense of botanical seeds [3, 15]. The International Institute of Tropical Agriculture (IITA) has devised a series of studies to control those reproduction abnormalities. This study is a continuation of such efforts and aimed to update recommendations on optimum time for hand pollination in yam breeding. We realized that the pollination success varied with the year, month, week, and hour of the day when the hand pollination is performed. The year, month, week, and hour of the day with well-distributed rainfall, high relative humidity and moderate temperatures were conducive to hand pollination for both *D. alata* and *D. rotundata* yam species. The year 2021 was more wet than 2020 and thus recorded higher pollination success rate than 2020. The finding that weather conditions bear significant influence on yam pollination outcome agreed with Mondo et al. [4] who showed variability in pollination success across years as a result of weather fluctuations while using 2010–2020 crossing block information. *D. alata* was more sensitive to the time of pollination than *D. rotundata*, and provided better results in the morning hours when the weather is still cool and wet. For instance, Mondo et al. [14] showed that *D. rotundata* pollen had a wide range of germination temperatures (15–35°C) compared to *D. alata* that gave better results at 25°C. The weather parameters' fluctuation with time could have explained the difference in pollination outcomes since the weather was often cool in the morning and hot the afternoon (Fig 2).

A previous study on yam showed that weekly variability in rainfall, temperature, relative humidity, sunshine, and the number of rainy days within the yam flowering window (July to November) significantly influenced the pollination outcomes in either the *D. rotundata* or *D.*

Table 1. Pollination time and seed production efficiency (SPE), seed setting rate (SSR) and seed viability (SV).

Species	Crossing time	SPE (%)	SSR (%)	SV (%)
<i>D. alata</i>	8–9 h	5.16	20.78	68.94
	9–10h	3.43	21.65	78.24
	10–11h	5.63	27.49	79.95
	11–12h	6.01	23.47	70.84
	12–13h	2.11	18.43	64.16
	13–14h	4.91	27.21	82.58
	14–15h	2.94	16.46	80.88
	15–16h	1.98	22.17	66.07
	16–17h	0.11	0.00	41.67
	Mean (%)	3.96	22.53	74.26
<i>D. rotundata</i>	8–9h	15.27	56.62	78.67
	9–10h	16.66	48.54	75.36
	10–11h	17.57	55.59	76.95
	11–12h	22.97	56.70	77.00
	12–13h	20.83	59.96	78.21
	13–14h	16.73	61.05	82.23
	14–15h	12.75	41.37	77.29
	15–16h	18.70	45.99	76.08
	16–17h	9.51	47.99	78.57
	Mean (%)	17.65	52.83	77.02
	Overall mean (%)	9.99	42.51	76.22
Statistics	F = 4.753 p = 9.66e-06	F = 0.946 p = 0.478	F = 0.891 p = 0.524	

<https://doi.org/10.1371/journal.pone.0269670.t001>

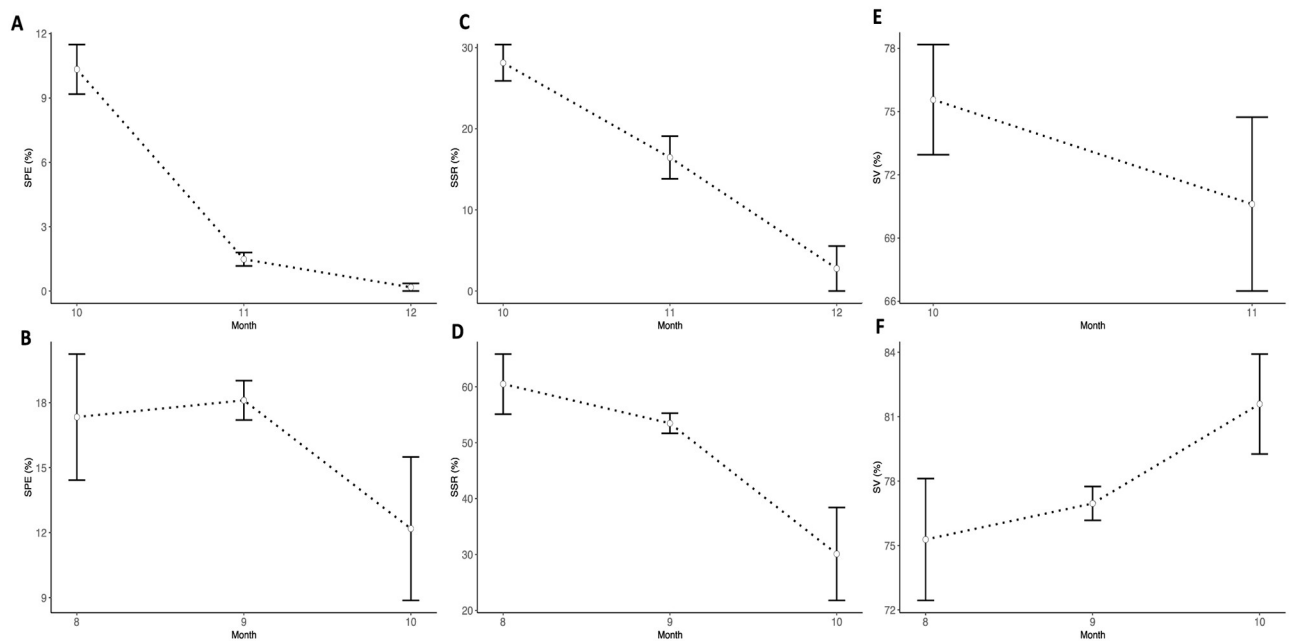


Fig 7. Dynamics of SPE, SSR and SV across crossing months. Monthly variability in SPE for *D. alata* (A) and *D. rotundata* (B), monthly variability in SSR for *D. alata* (C) and *D. rotundata* (D). Monthly variability in seed viability for *D. alata* (E) and *D. rotundata* (F). The number 8 refers to August and 12 to December.

<https://doi.org/10.1371/journal.pone.0269670.g007>

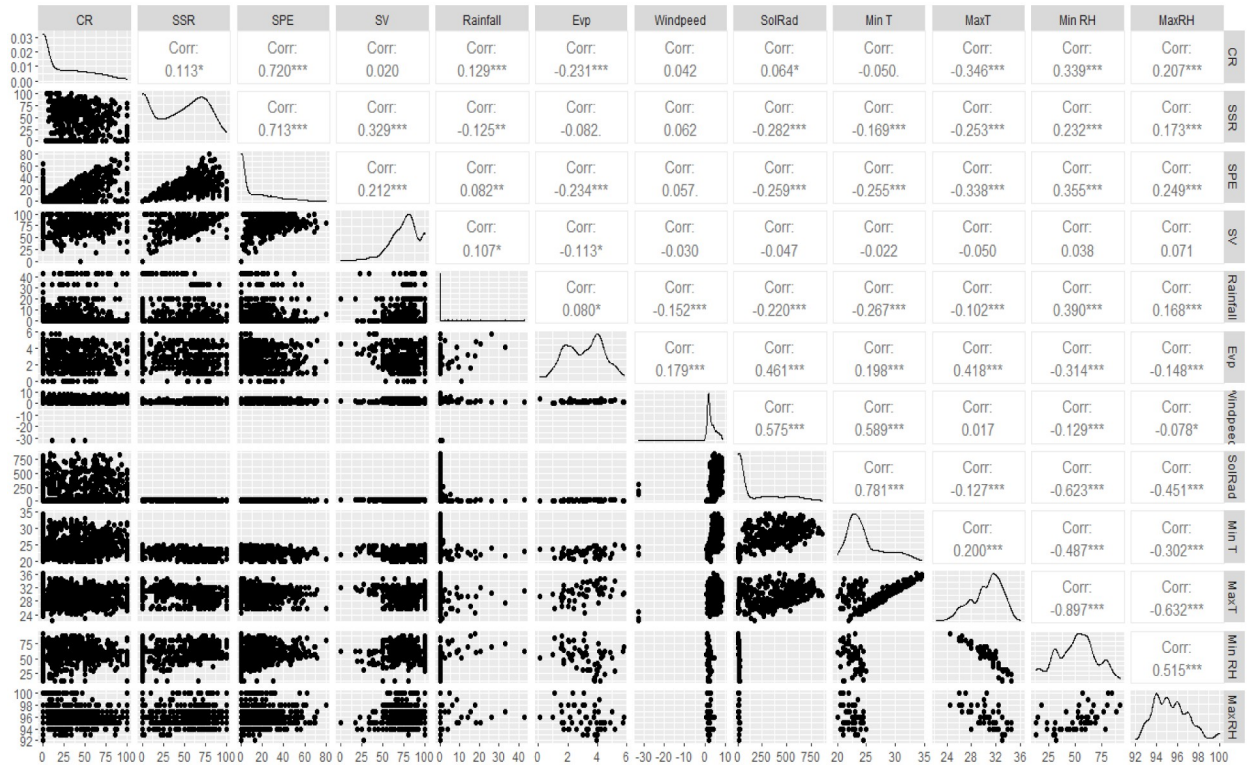


Fig 8. Relationships among yam pollination traits and weather parameters. CR = crossability rate/pollination success, SSR = seed set rate, SPE = seed production efficiency, SV = seed viability, Evp = evaporation, windpeed = wind speed, SolRad = solar radiation, Min T = minimum temperature, MaxT = maximum temperature, Min RH = minimum relative humidity, MaxRH = maximum relative humidity.

<https://doi.org/10.1371/journal.pone.0269670.g008>

alata crossing blocks [4]. Abraham and Nair [11] also reported that successful pollination in yam is significantly associated with high relative humidity and moderate atmospheric temperatures. As supported by this study, making crosses in some weeks of August or in the second half of October for *D. rotundata* and after 15th November for *D. alata* could result in low pollination success due to the suboptimal weather conditions. As recommended by Mondo et al. [4] there is the need for supplemental irrigation in yam crossing blocks to reduce the water deficit’s adverse effects on yam reproductive phases during these months. Since *D. alata* presents no dormancy at harvest, options of establishing the crossing block as early as March (with supplemental irrigation) could help avoiding the coincidence of its flowering window with harsh environmental conditions, as it was the case the last two years.

In contrast to most reports on yam pollination, *D. rotundata* had higher crossability rate and higher seed production efficiency than *D. alata* for both 2020 and 2021. However, *D. alata* had consistently higher values (31%) than *D. rotundata* (23%) when bulking 2010–2020 crossing block information at IITA [4]. For our study period (2020–2021), months corresponding with the *D. alata* flowering window (October–December) were drier compared to those of *D. rotundata* (August–October) which benefited from relatively high and well-distributed rains and moderate temperatures (S9 Fig, S3 Table). It is noteworthy that *D. alata* is sensitive to rainfall distribution, sunshine, relative humidity, and temperatures [4, 11] which were suboptimal during *D. alata* flowering window.

For both years, crosses made in morning hours (8–12 a.m.) had better results than those from afternoons for *D. alata*. Though not significant, mid-day seemed optimal for *D. rotundata*. Based on the crossing block data, 11 p.m. could be considered as optimal for both species

while lowest rates were recorded at 4 p.m. for both species. However, *in vitro* pollen germination tests supported the mid-day (12 noon–2 p.m.) as the optimal time for pollen collection for both species while both morning and evening extremes should be avoided. This result aligned with findings by Akoroda [10, 19] that showed that *D. rotundata*'s better pollination success was achieved when crosses are made between 12 noon and 2 p.m. at IITA Ibadan, Nigeria. The major reason for this is that male flowers open at around noon and their pollen is viable for only 4–5 h. As shown by Mondo et al. [3], pollination time can be enhanced by opening the male flowers 1 h before their natural opening to take out the anther and deposit it on the surface of the stigma. These findings, confirming the mid-day as the best pollination time, partly dismissed our hypothesis that the optimal time for hand pollination, recommended four decades ago, might have been affected by climate changes. Since weather conditions are conducive for human labor in morning hours than the mid-day, we could recommend concentrating crossing activities at 11–12 a.m. interval for both species since morning was better than afternoons for *D. alata* and there were no significant differences between morning and mid-day hours for *D. rotundata*. Results showed an influence of the flower bagging on pollination outcomes, 4–6 days being the optimal interval between flower bagging and crossing time. Further investigations are necessary to elucidate reasons behind the influence of bagging-to-crossing time interval in yam crossing blocks. Though the female flower is receptive for 9–11 days after opening, we recommend further studies assessing the optimum period when the stigma is most receptive to pollen to increase the pollination outcome in yam.

Influence of the pollination time on the seed setting rate and the seed viability

There were significant differences among weekly SPE, SSR, and SV, weeks with conducive climatic conditions provided the best outcomes. Indeed, factors such as high maximum relative humidity, minimum relative humidity, solar radiation, and rainfall are instrumental for high pollination success, SPE and SSR while high temperatures, sunshine, and evaporation that are intense the afternoon and at the end of the flowering window (Fig 2) should be avoided. The seed viability was indifferent to most weather conditions except that it was negatively sensitive to high evaporation (mostly experiencing the afternoon and at the end of the flowering window) and responded positively to high rainfall. Bandeira e Sousa et al. [29] showed that environmental factors (temperature, rainfall, and photoperiod) contribute to a post-zygotic barrier in crops like cassava. They showed that high temperatures induced flower abortion and reduced the number of female flowers per inflorescence and seed setting rate. There was also a decreased pollen tube growth rate at higher average temperatures than lower temperatures, supporting the hypothesis that environmental conditions affect the efficiency of sexual reproduction, and that appropriate planning of planting dates and locations can maximize seed production [29, 30]. Environmental factors such as rainfall and temperature had also affected flowering, pollen production, and fruit development in cocoa [31].

Conclusion

This study, based on two-year crossing data, showed that the time of pollination had an influence on the pollination success rates. The year, month, week, and hour of the day with well-distributed rainfall, high relative humidity and moderate temperatures were conducive to hand pollination for both yam species. Crossing block data, weather information, and *in vitro* pollen germination seemed to encourage morning to mid-day hybridization for better pollination results, especially for production of viable seeds. Pollination success, seed production efficiency, and seed viability were higher when pollination is made at the beginning or in the

middle of the flowering season than the end of it. Special measures should be devised for *D. alata* as it was the most sensitive to weather conditions, and the months corresponding to its flowering window had globally suboptimal climatic conditions for both years.

Supporting information

S1 Fig. Genotypic variability in pollen germination in *D. alata* and *D. rotundata*.

(DOCX)

S2 Fig. Pollination success rates across crossing weeks for 2020 and 2021. (A) *D. alata* and (B) *D. rotundata*.

(DOCX)

S3 Fig. Dynamics of SPE (A), SSR (B) and SV (C) regardless of the species.

(DOCX)

S4 Fig. Weekly seed production efficiency across the crossing window: (A) *D. alata* and (B) *D. rotundata*.

(DOCX)

S5 Fig. Weekly seed setting rate (SSR) across the crossing windows: (A) *D. alata* and (B) *D. rotundata*.

(DOCX)

S6 Fig. Weekly seed viability rate across the crossing windows: (A) *D. alata* and (B) *D. rotundata*.

(DOCX)

S7 Fig. Relationship among pollination success related traits and the weather parameters using the species as a factor.

(DOCX)

S8 Fig. Weather variables having the most effect on yam pollination success regardless of the species.

(DOCX)

S9 Fig. Fluctuations in weather data across months covering the yam flowering window.

(DOCX)

S1 Table. Description of yam genotypes used in hand pollination experiment.

(DOCX)

S2 Table. ANOVA table for pollination success across crossing hours for *D. alata*.

(DOCX)

S3 Table. Comparison of weather data for 2020 and 2021 yam crossing windows.

(DOCX)

Acknowledgments

We are also grateful to the yam breeding team at IITA Ibadan for active participation in data collection. The first author is grateful for the African Union Commission's scholarship for his Ph.D. studies at the Pan African University-Institute of Life and Earth Sciences (PAULESI). Yannick Mugumaarhahama and Géant B. Chuma are acknowledged for statistical advice.

Author Contributions

Conceptualization: Jean M. Mondo, Paterne A. Agre, Asrat Asfaw.

Data curation: Jean M. Mondo, Paterne A. Agre.

Formal analysis: Jean M. Mondo, Paterne A. Agre.

Funding acquisition: Asrat Asfaw.

Methodology: Jean M. Mondo, Paterne A. Agre, Asrat Asfaw.

Supervision: Paterne A. Agre, Malachy O. Akoroda, Asrat Asfaw.

Validation: Malachy O. Akoroda, Asrat Asfaw.

Visualization: Jean M. Mondo, Paterne A. Agre.

Writing – original draft: Jean M. Mondo, Paterne A. Agre.

Writing – review & editing: Jean M. Mondo, Paterne A. Agre, Robert Asiedu, Malachy O. Akoroda, Asrat Asfaw.

References

1. Asiedu R, Sartie A. Crops that feed the world 1. Yams. Food Security. 2010; 2: p. 305–315. <https://doi.org/10.1007/s12571-010-0085-0>
2. Frossard E, Aighewi BA, Aké S, Barjolle D, Baumann P, Bernet T et al. The challenge of improving soil fertility in yam cropping systems of West Africa. Frontiers in Plant Science. 2017; 8: p.1953. <https://doi.org/10.3389/fpls.2017.01953> PMID: 29209341
3. Mondo JM, Agre PA, Edemodu A, Adebola P, Asiedu R, Akoroda MO et al. Floral Biology and Pollination Efficiency in Yam (*Dioscorea* spp.). Agriculture. 2020; 10(11): p.560.
4. Mondo JM, Agre PA, Edemodu A, Asiedu R, Akoroda MO, Asfaw A. Cross compatibility in intraspecific and interspecific hybridization in yam (*Dioscorea* spp.). Scientific Reports. 2022; 12(1): p. 1–13.
5. Salami AE. Performance of Hand-pollinated Maize Genotypes at Different Daytimes in a Nigeria Forest Agro-ecosystem. Journal of Experimental Agriculture International. 2016; p.1–9.
6. Maity A, Chakarbarty SK, Pramanik P, Gupta R, Parmar SS, Sharma DK. Response of stigma receptivity in CMS and male fertile line of Indian mustard (*B. juncea*) under variable thermal conditions. International Journal of Biometeorology. 2019; 63(2): p.143–152.
7. Raina M, Kaul V. Assessment of stigma receptivity via papillar integrity in *Kigelia pinnata* (Bignoniaceae). Proceedings of the National Academy of Sciences, India Section B: Biological Sciences. 2019; 89(3): p. 867–875.
8. Katano K, Oi T, Suzuki N. Failure of pollen attachment to the stigma triggers elongation of stigmatic papillae in *Arabidopsis thaliana*. Frontiers in Plant Science. 2020; 11: p.989.
9. Akoroda MO, Wilson JE, Chheda HR. Artificial pollination, pollen viability, and storage in white yam. In Tropical root crops: research strategies for the 1980s: proceedings of the First Triennial Root Crops Symposium of the International Society for Tropical Root Crops-Africa Branch, 8–12 Sept. 1980, Ibadan, Nigeria. IDRC, Ottawa, ON, CA, 1981.
10. Akoroda MO. Floral biology in relation to hand pollination of white yam. Euphytica. 1983; 32: p. 831–838.
11. Abraham K, Nair PG. Floral biology and artificial pollination in *Dioscorea alata* L. Euphytica. 1990; 48: p. 45–51.
12. Bakayoko Y, Kouakou AM, Dibi KEB, Ehounou AE, Essis BS, Nzue B et al. Effect of manual pollination period on the fruiting of yams (*Dioscorea rotundata* Poir; Dioscoreaceae) in Ivory Coast. European Scientific Journal. 2019; 15(27): p. 448–464.
13. Agre P, Nwachukwu C, Olanmi B, Obidiegwu J, Nwachukwu E, Adebola P et al. Sample preservation and plant sex prediction in white guinea yam (*Dioscorea rotundata* Poir.). Journal of Applied Biotechnology Reports. 2020; 7(3): p. 145–151.
14. Mondo JM, Agre PA, Asiedu R, Akoroda MO, Asfaw A. Optimized Protocol for In Vitro Pollen Germination in Yam (*Dioscorea* spp.). Plants. 2021; 10(4): p.795.

15. Asfaw A, Mondo JM, Agre PA, Asiedu R, Akoroda MO. Association mapping of plant sex and cross-compatibility related traits in white Guinea yam (*Dioscorea rotundata* Poir) clones. *BMC Plant Biology*. 2022; 22:294.
16. Di-Giovanni F, Kevan PG. Factors affecting pollen dynamics and its importance to pollen contamination: a review. *Canadian Journal of Forest Research*. 1991; 21(8): p.1155–1170.
17. Bhattacharya A, Mandal S. Pollination, pollen germination and stigma receptivity in *Moringa oleifera* Lamk. *Grana*. 2004; 43(1): p. 48–56.
18. He G, Hu F, Ming J, Liu C, Yuan S. Pollen viability and stigma receptivity in *Lilium* during anthesis. *Euphytica*. 2017; 213(10): p.1–10.
19. Akoroda MO. Pollen management for controlled hybridization of white yam. *Scientia Horticulturae*. 1985; 25: p. 201–209.
20. Segnou M, Fatokun CA, Akoroda MO, Hahn SK. Studies on the reproductive biology of white yam (*Dioscorea rotundata* Poir.). *Euphytica*. 1992; 64: p. 197–203.
21. Martin FW, Cabanillas E, Ortiz S. Natural pollination, hand pollination and crossability of some Mexican species of *Dioscorea*. *Tropical Agriculture*. 1963; 40: p. 135–141.
22. Rader R, Bartomeus I, Garibaldi LA, Garratt MPD, Howlett BG et al. Non-bee insects are important contributors to global crop pollination. *Proceedings of the National Academy of Sciences of the United States of America*. 2016; 113: p.146–151. <https://doi.org/10.1073/pnas.1517092112> PMID: 26621730
23. Sousa-Lopes B, Calixto ES, Torezan-Silingardi HM, Del-Claro K. Effects of ants on pollinator performance in a distylous pericarpial nectary-bearing Rubiaceae in Brazilian Cerrado. *Sociobiology*. 2020; 67: p. 173–185.
24. Schiestl FP, Ayasse M. Post-pollination emission of a repellent compound in a sexually deceptive orchid: a new mechanism for maximising reproductive success? *Oecologia*. 2001; 126: p. 531–534. <https://doi.org/10.1007/s004420000552> PMID: 28547238
25. Torezan-Silingardi HM, Silberbauer-Gottsberger I, Gottsberger G. Pollination Ecology: Natural History, Perspectives and Future Directions. In: Del-Claro K., Torezan-Silingardi H.M. (eds) *Plant-Animal Interactions*. Springer, Cham. 2021. https://doi.org/10.1007/978-3-030-66877-8_6
26. Lebot V, Abraham K, Kaoh J, Rogers C, Molisale T. Development of anthracnose resistant hybrids of the Greater Yam (*Dioscorea alata* L.) and interspecific hybrids with *D. nummularia* Lam. *Genetic Resources and Crop Evolution*. 2019; 66: p. 871–883.
27. Mondo JM, Agre PA, Asiedu R, Akoroda MO, Asfaw A. Genome-wide association studies for sex determination and cross-compatibility in water yam (*Dioscorea alata* L.). *Plants*. 2021; 10(7): p.1412.
28. Wickham H. *ggplot2: Elegant Graphics for Data Analysis*. Springer-Verlag New York. 2016. <https://ggplot2.tidyverse.org>. “R software”
29. Bandeira e Sousa M, Andrade LR, Souza EH, Alves AA, de Oliveira EJ. Reproductive barriers in cassava: Factors and implications for genetic improvement. *PloS one*. 2021; 16(11):e0260576. <https://doi.org/10.1371/journal.pone.0260576> PMID: 34847205
30. Ramos Abril LN, Pineda LM, Wasek I, Wedzony M, Ceballos H. Reproductive biology in cassava: stigma receptivity and pollen tube growth. *Communicative & Integrative Biology*. 2019; 12(1): p. 96–111. <https://doi.org/10.1080/19420889.2019.1631110> PMID: 31308874
31. Omolaja SS, Aikpokpodion P, Adedeji S, Vwioko DE. Rainfall and temperature effects on flowering and pollen productions in cocoa. *African Crop Science Journal*. 2009; 17(1): p. 41–48.